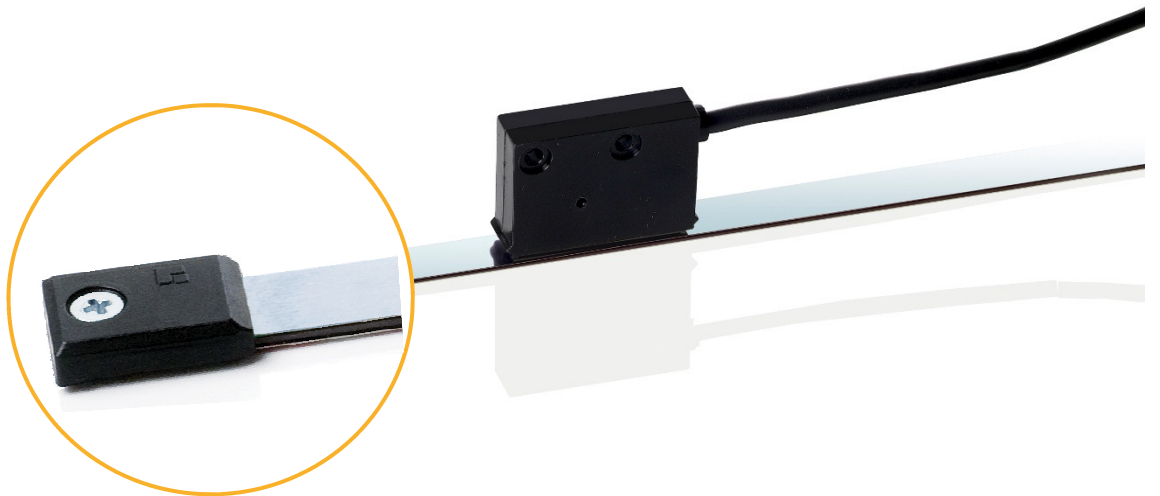


Series GMIX²

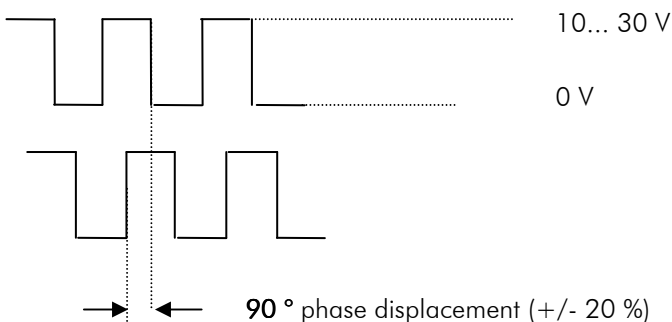
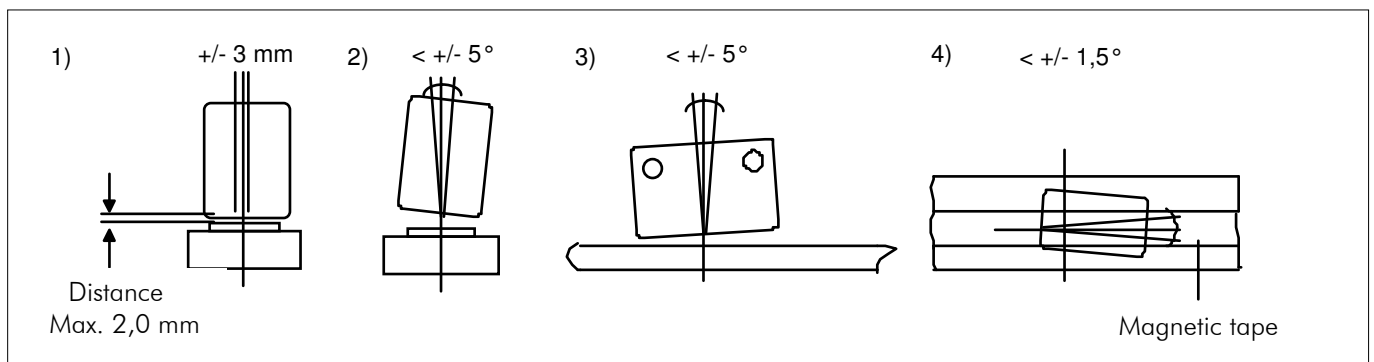


Magnetic, incremental Length Measuring System, best suitable for long distances

General: With GMIX2, ELGO offers an incremental sensor, which can be installed with a distance from up to 4 mm to the magnetic tape. With a resolution of 2.5 mm (repeating accuracy +/- 2.5 mm) and a max. operation speed of 10 m/s (output frequency 4 KHz), GMIX2 is suitable for applications in storage- or conveyor- techniques resp. for longer distances. Thanks to the wear-free measuring-principle (by magnetic scanning) and high protection class of IP67, the sensor works in rough environments always uninfluenced and reliably. The translator circuit, which converts the detected signals into 90° shifted square wave signals A and B (like output signals of rotary encoders), is already integrated in the sensor head. Thus GMIX2 can be connected directly to follow-up circuits (e.g. position indicator). The system is supplied with 10... 30 VDC. The output signals are HTL - according to supply level.

Product features:

- Predestined for tasks in storage- or conveyor- techniques
- Resolution of 2.5 mm (at 4 edge triggering)
- Repeating accuracy +/- 2.5 mm
- Compact sensor with integrated translator circuit
- Speed proportional square wave outputs
- High protection class of IP67

Pulse data:**Installation:****Incline tolerance sensors**

Technical specifications:

Resolution	2,5 mm (at 4 edge triggering)
Repeating accuracy	+/- 2.5 mm
Accuracy at 20° C in μm	+/- (25 + 20 x L) L = effective measuring length in meters
Distance tape/sensor	max. 4,0 mm
Power supply voltage	10... 30 VDC, stabilized
Output levels	HTL 10.. 30 VDC (according to supply voltage, less approx.. 0.7 V)
Material of housing	HM-PA (Polyamid), black
Protection class (sensor head)	IP 67
Operation temperature	-10... +70 °C (-25... +85 °C) on request
Storage temperature	-25... +85 °C
Output current	max. 20 mA per channel
Outputs	push/pull, durable short circuit proof
Consumption	ca. 30 mA
Output frequency	4 kHz (per channel A or B)
Operating speed	max. 10,0 m/s
Cable length	on request max. 30 m possible

Order reference:

For orders, please use the following order code:

GMIX2 - $\overline{\text{A A A}} - \overline{\text{B B}}, \overline{\text{B}}$

A Version

000 ELGO standard

001 First special version

B Signal cable length in XX.X m

1,5 m Standard length

For Example:

GMIX2 - 000 - 01,5
A A A - B B , B

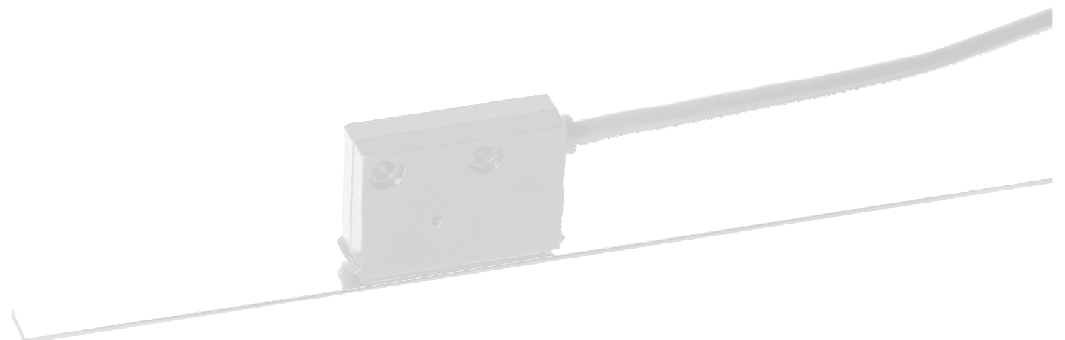
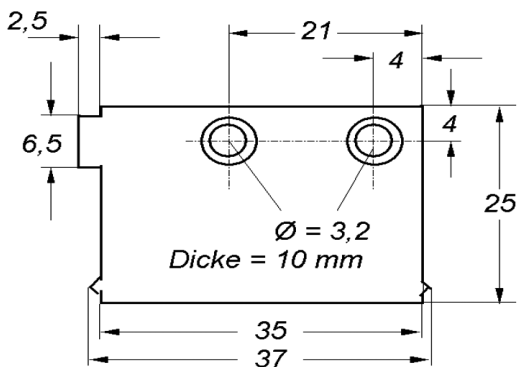
GMIX2 ELGO standard, signal cable length: 1,5 m.

Your order:

GMIX2 - $\overline{\text{A A A}} - \overline{\text{B B}}, \overline{\text{B}}$

Dimensions

Sensor:



Accessories:

MB20-50-10-1-R	Magnetic tape, 5 mm pole width
Magnetic tape end cap 10 mm - Set	2 end caps (10 mm) and 2 M3 screws; additional fixation in the radial and linear area, as well as a protection of the magnetic tape ends <u>Order No. 731031002</u>
Magnetic tape end cap 10 mm	1 end cap (10 mm) <u>Order No. 731031000</u>
FS2050	Guiding rail with MB20-50-10-1-R
FW2060	Carriage for GMIX2 sensor
AP1.0	Cover, length 1,0 m

